

IS-25-091

Challenges faced by law enforcement & the communities they serve due to a lack of real-time information.





Rep. Ross Ford



Sen. Darrell Weaver



Curt Foster

Oklahoma City, Oklahoma



Chris Foster

Oklahoma City, Oklahoma

WHAT JOINS US TODAY?

The Problem For Police

“What is your biggest concern during a traffic stop?”

- “The unknown.”
- “Who have I just pulled over?”
- “Could there be a weapon in this vehicle?”
- “What kind of environment am I stepping into?”
- “[The] lack of information during routine traffic stops.”

DIABETIC EPISODE

DUI

History of Diabetes 1 or 2

Taking Insulin or glucose lowering medicine

Cold, clammy skin

Low or high blood sugar

Confusion/Altered Mental Status
Slurred Speech

Poor Coordination

Aggressive or Unusual Behavior

Drowsiness

Nausea/Vomiting

Alcohol on breath

Pinpoint or dilated pupils

Track marks/Paraphernalia

Warm Skin



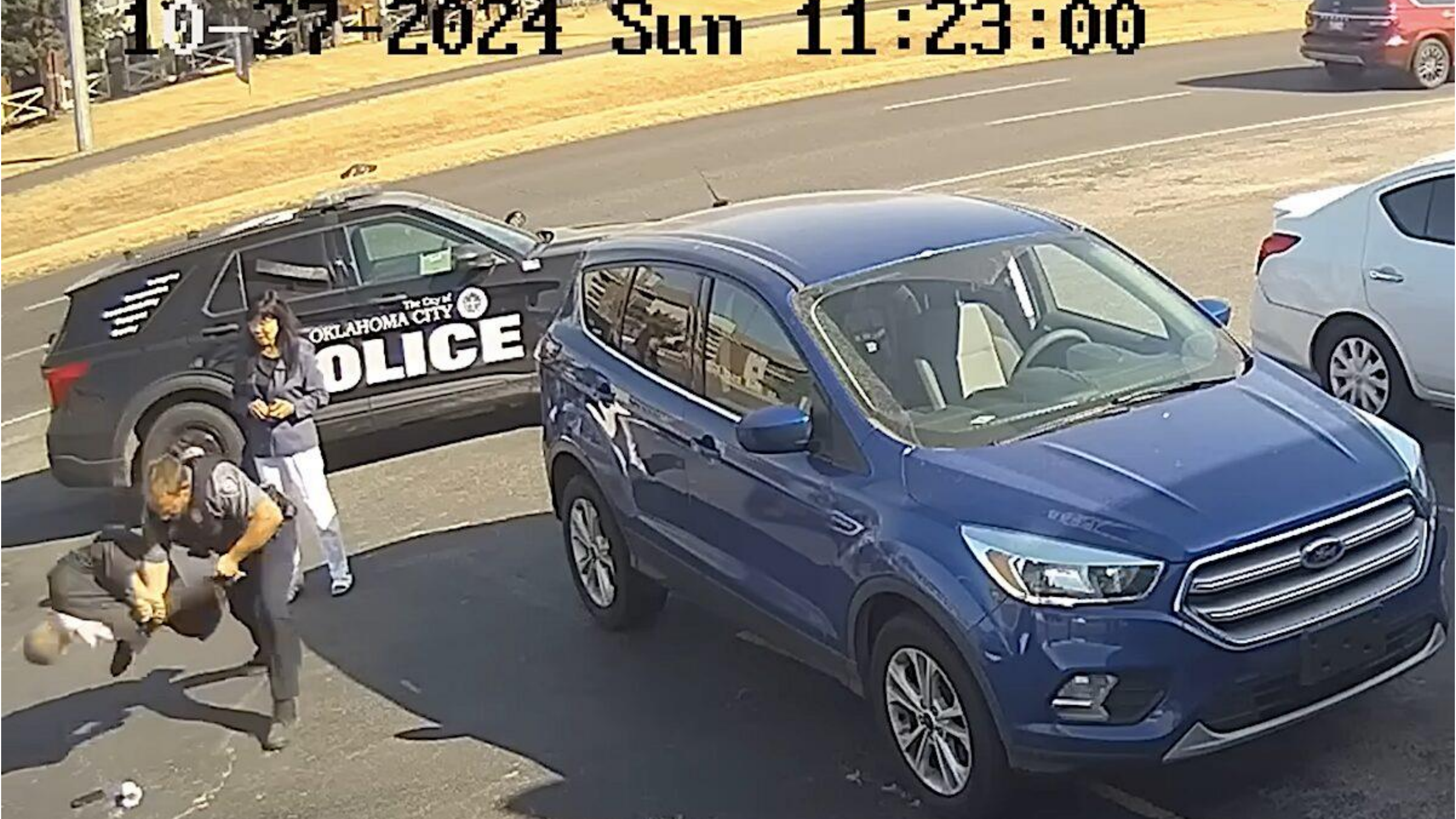
Steve Le

Mustang/Yukon, Oklahoma



Executive Director of the Asian District Cultural
Association

10/27/2024 Sun 11:23:00





2024 AAPI Voter Demographics | OKLAHOMA

77,564

ELIGIBLE AAPI VOTERS*

27,051

**FOREIGN BORN
NONCITIZENS**

47.2%

**AAPI VOTER ELIGIBILITY
GROWTH (2012-2022)**

OK

AAPI POPULATION SIZE*

137,605

36,189

**FOREIGN BORN
CITIZENS**

2.64%

**AAPI SHARE OF
ELECTORATE IN
OKLAHOMA**

53.1% POPULATION GROWTH
SINCE 2012

69,942

**NATIVE BORN
CITIZENS**

** Includes multi-racial population*



Dr. Seleena Smith

Oklahoma City, Oklahoma

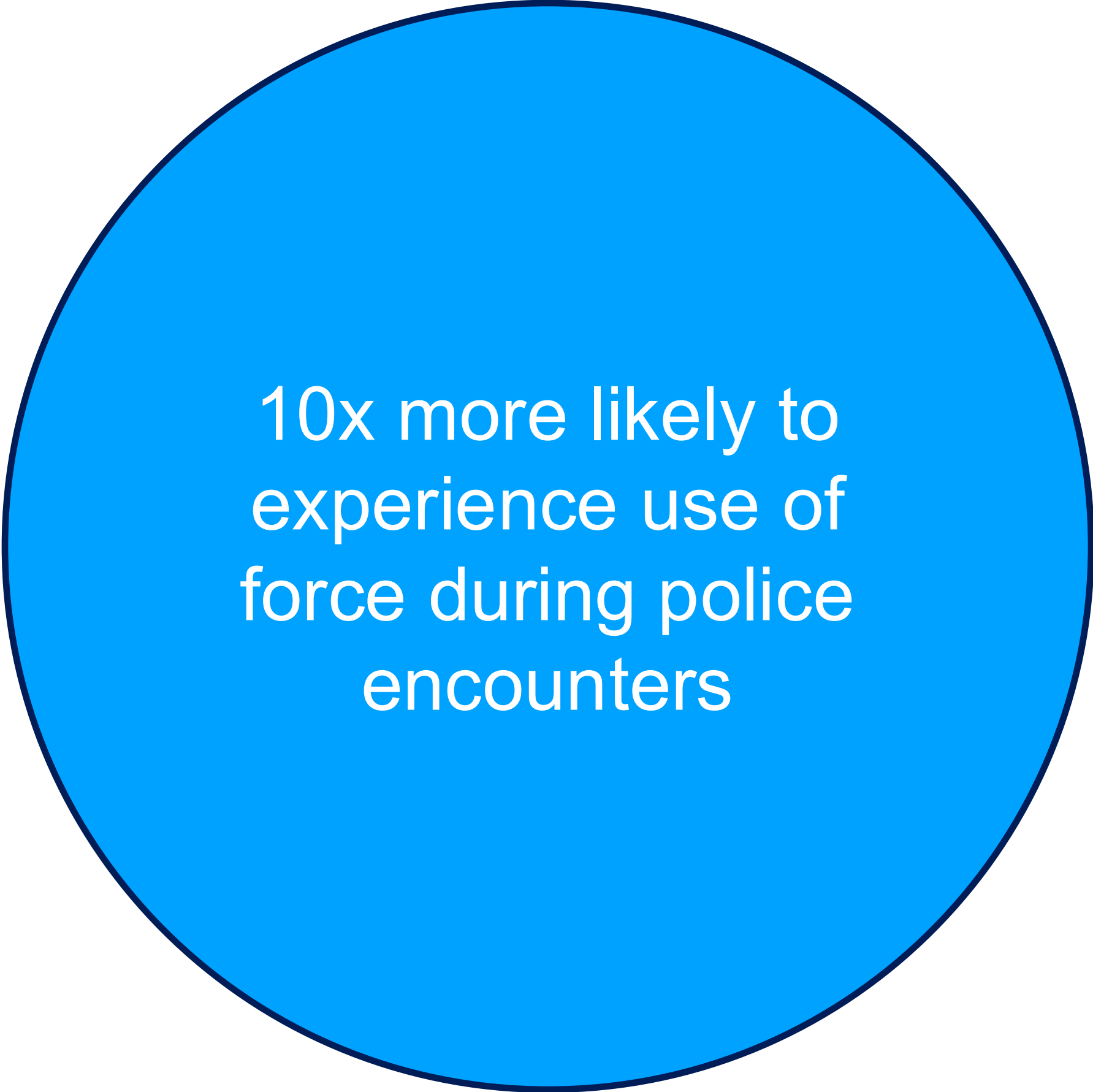


Mental Health Coach


Owner, REAL Liberation

WHAT IS MENTAL ILLNESS?

Individuals with Mental Health Illness



10x more likely to
experience use of
force during police
encounters



Make up one quarter
of all police involved
fatal encounters

“While police should not be the first responders to interact with inc



Morgan Davis

Oklahoma City, Oklahoma



Leadership Education in Neurodevelopmental
and Related Disabilities Self Advocacy Fellow

What is Disability

According to the World Health Organization, (WHO) Disability arises from the interaction between an individual's health condition and environmental / personal factors like inaccessibility.

The WHO also states that intellectual Disabilities are a group of conditions characterized by significantly below average intellectual functioning and adaptive behavior with an onset during the developmental period. (Before age 18)

Concerns Regarding PWDs & Traffic Stops

Misunderstanding or Miscommunication:

Due to advanced vocabulary big words, used by officers or communication barriers people with disabilities might have a hard time understanding what's being asked of them or what is happening around them. Plain language and sign language interpretation might help to bridge this gap.

Assistive devices such as canes, walkers or hearing aids might be mistaken for weapons by officers.

Physical or psychological safety can be at risk:

Examples can include, removing someone from their car without a wheelchair, threatening someone who is deaf or hard of hearing.



OKLAHOMA
ENGINEERED TO THE EXACT SPECIFICATIONS OF CHAMPIONSHIP ATHLETES
FOOTBALL

THE HEISMAN MEMORIAL TROPHY
PRESENTED BY
THE HEISMAN TROPHY TRUST
TO
SAM BRADFORD
UNIVERSITY OF OKLAHOMA
AS THE OUTSTANDING COLLEGE FOOTBALL PLAYER
IN THE COUNTRY FOR
2024

- **VETERAN VIDEO**

Duane Cummings

Oklahoma City, Oklahoma



Executive Director Warriors for Freedom

US Army Veteran

WARRIORS

ESTD

2012

FOR

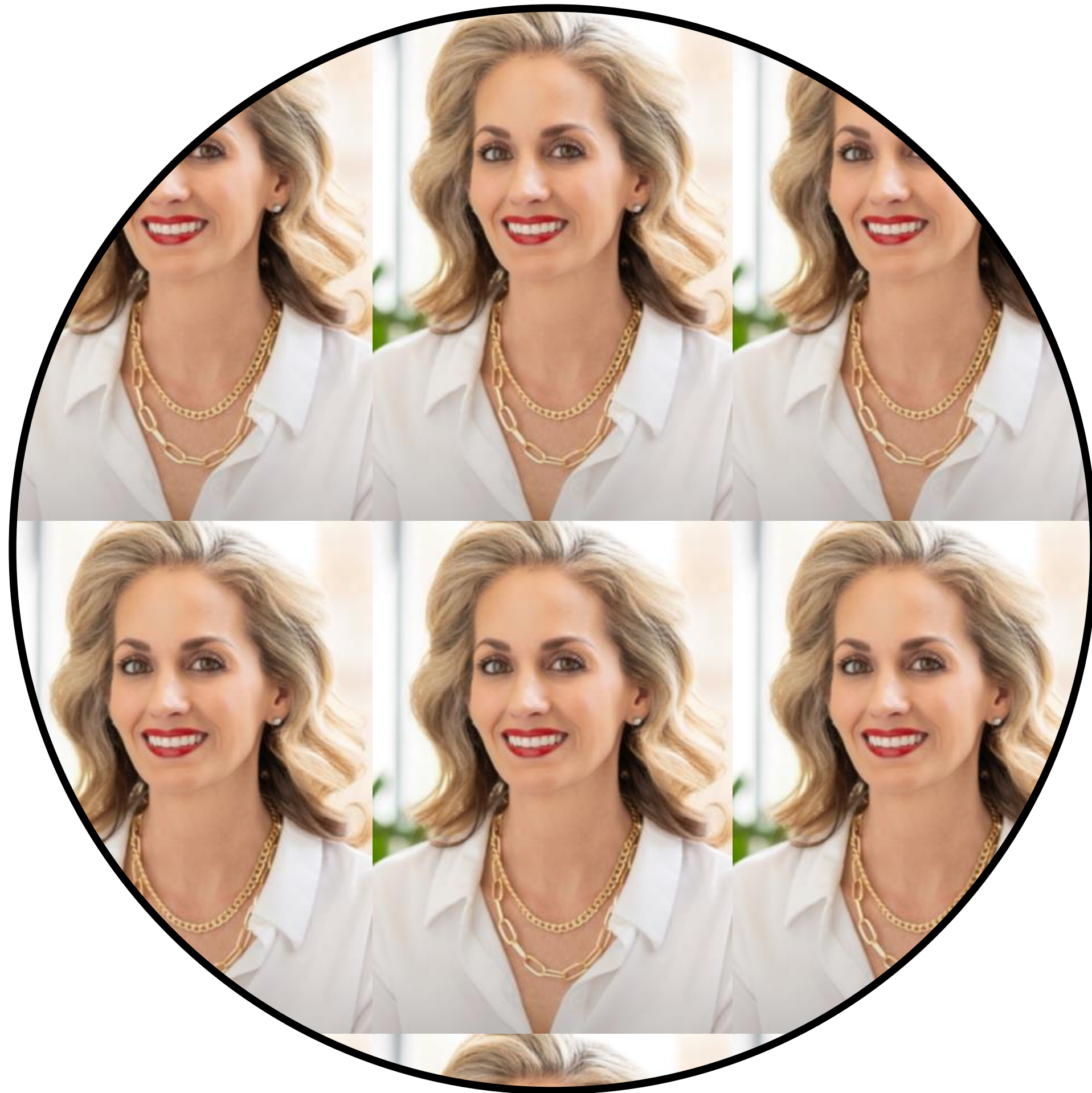
MEM

FREEDOM









Emily Scott

Oklahoma City, Oklahoma



AUTISM
FOUNDATION
of OKLAHOMA

Executive Director The Autism Foundation of
Oklahoma

AFO Mission

To improve the lives of Oklahomans with autism and their families.

AUTISM
FOUNDATION
of OKLAHOMA



The Challenge: Communication Gaps in Police–Autism Encounters

- Autism affects communication, sensory processing, and stress response—behaviors (e.g., avoiding eye contact, stimming, delayed answers) can be misread as defiance.
- High-stress settings like traffic stops or emergencies increase the chance of misunderstanding.
- Miscommunication can quickly escalate, putting both the individual and the officer at risk.



Why Communication Tools Are Critical

- Provides **real-time information** about an individual's needs and communication preferences.
- Offers **quick, evidence-based guidance** to officers on how to speak calmly and clearly.
- Reduces anxiety by helping officers adjust their approach (e.g., lower sensory triggers, allow extra processing time).
- Improves **mutual safety and trust**, creating more positive outcomes.



Impact on Public Safety & Community Confidence

- Fewer incidents of escalation and use-of-force complaints.
- Builds trust between law enforcement and the autism community.
- Demonstrates a commitment to keeping **ALL Oklahomans** safe
- Tools like **BlueJay**, REAL ID designations, and sensory kits are cost-effective and easy to scale.





The routine traffic stop is
anything But Routine.





Stan Campbell

Oklahoma City, Oklahoma



De-Escalation Tactics Instructor

Individuals with Intellectual Developmental
Disabilities (IDD)



“BRIDGING THE GAP.”



“I would like to see BlueJay offered statewide.”

- Wade Gourley (Former OKC Police Chief)

“It’s the greatest tool you can give a police officer and their communities.”



Sid Porter

Oklahoma City, Oklahoma



City of Midwest City Police Department

City Council Member - City of Moore



**Set The Oklahoma Standard
for National Law Enforcement.**





Safer Together.