



Department of Corrections Health Services

OKLAHOMA DEPARTMENT OF CORRECTIONS
<http://doc.ok.gov>

Health Services Overview

- The Department of Corrections is responsible for the medical, dental, optometric, and mental health care of all who are incarcerated within the state prison system
- DOC Health Services provides direct care services at 24 facilities
- DOC operates five facilities with 24 hour medical staffing. Four of these facilities are designated as infirmaries. There are 49 infirmary beds within the system
- DOC operates 2 mental health acute care units (JHCC and MBCC) one for males and one for females

FY 2019 – PRIMARY CARE

Medical Sick Call:

- 90,876 - Medical Request for Health Services
- 133,343 - Nursing Protocols
- 45,344 - Mid Level Provider Visits
- 40,312 - Physician Visits

Dental Sick Call:

- 25,361 – Dental Request for Health Services
- 34,916 – Dental Visits

Mental Health Sick Call:

- 24,653 – Mental Request for Health Services
- 57,711 – Psychotropic Management Visits
- 135 – Average Therapy Groups held monthly

Off-Site Care and Specialty Care

- DOC/Rural Hospital (LMH) partnership
 - 22 inpatient beds
- DOC/OUMC partnership
 - level one trauma center
 - level three treatment center for specialty care in areas such as Oncology, Obstetrics, etc.
- Network Providers across the state

Off Site Specialty Care 2019

Contracted Provider	7,574
Lindsay Municipal Hospital	2,551
OU Medical Center	6,558
Telehealth	250
Total	16,933

Top Five Specialties 2019

Specialty	Contracted	LMH	OUMC	Total
Orthopedic	517	1,176	505	2,198
Radiology	845	227	554	1,948
Dean McGee Eye Institute	1,472	-	-	1,472
Optometrist	1,438	-	1	1,439
Surgery	229	603	349	1,181

Medicaid Eligibility

- Hospitalizations
 - Beyond 24 hours inpatient in hospital setting
- And must meet current State Medicaid eligibility criteria
 - 65 or older
 - Blind
 - Disabled
 - Pregnant

Hospitalization Medicaid Applications

- In FY 2019, DOC submitted 352 applications for Medicaid reimbursement on inpatient hospitalizations
- 346 applications were approved

Medicaid Savings

- FY 2019 Medicaid Savings
 - Total Billed: \$9,082,596.09
 - Total Medicaid Paid: \$2,106,309.07
 - Total DOC Share Paid: \$805,202.87
 - Total DOC Savings: \$6,600,640.51

Mental Health Services

Qualified Mental Health Professionals (Psychiatrists, Psychologists, Social Workers, Counseling Clinicians, Social Service Specialists)

- Joseph Harp Correctional Center-Medium Security Mental Health Unit (Males)
- Mabel Basset Correctional Center-Medium Security Mental Health unit (Females)
- Reentry Services Available through Partnership with the Oklahoma Department of Mental Health & Substance Abuse Services Health

Mental Health

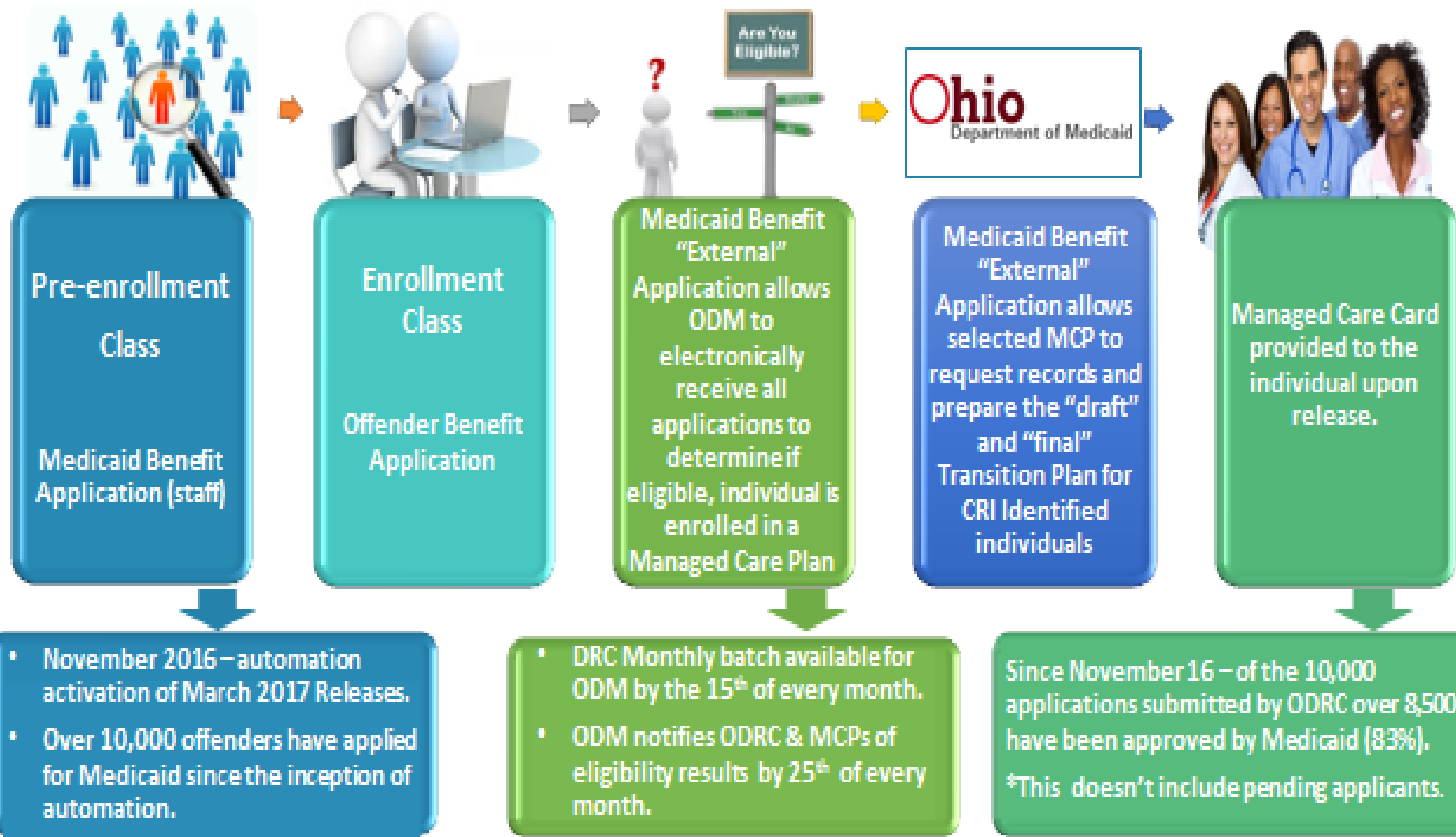
- Approximately 16,784 (64%) out of 26,114 incarcerated offenders have a history of, or are currently exhibiting some form of mental illness.
- Approximately 23% of the inmate population are prescribed psychotropic medication.

Mental Health

When an inmate with severe mental illness discharges from custody:

- Department of Mental Health Services and Substance Abuse (DMHSAS) discharge managers, facility mental health staff, and DOC Coordinator of Mental Health Re-Entry work to develop a continuum of care and establish benefits
- In FY 2018, 182 applications for disability Medicaid were submitted. 118 application were approved.
- National approval rate for benefits based on mental health is approximately 35%
- Oklahoma DOC approval rate has never been below 62% and has been as high as 90%.

Medicaid Enrollment Process Overview



New York Medicaid Waiver Proposal

Contingent upon approval from the Centers for Medicare & Medicaid Services (CMS), New York would be the first state to have inmates eligible for Medicaid reimbursement 30 days prior to release from prison or jail



New York Medicaid Waivers

If approved, the waiver would:

- Establish continuity of care
- Will target individuals with two or more chronic physical/behavioral health conditions who are Medicaid enrolled and currently in suspended status.
- Medicaid covered services 30 days prior to release will include care management “in reach services” such as: care needs assessment, discharge planning referral and appointment development with community treatment providers; clinical consultation services with medical and behavioral health practitioners and medication management plans.

DOC

Discharge Procedures

- As part of DOC's pre-release plan, medical and mental health staff must be contacted at least six months prior to release. Medical and mental health staff will provide information and referrals as needed for discharging inmates
- The assigned case manager will notify medical within 30 days of an inmate's projected release date. Medical staff will ensure necessary referrals to follow-up medical care are made and up to a 60 day supply of all currently prescribed medications may be issued to inmates not covered by insurance plans.
- Mental health staff will ensure that proper discharge planning activities, resources and support are available for any inmate currently receiving mental health treatment or who have a history of mental health treatment. (Mental Health levels A, B, C1, C2, or D)